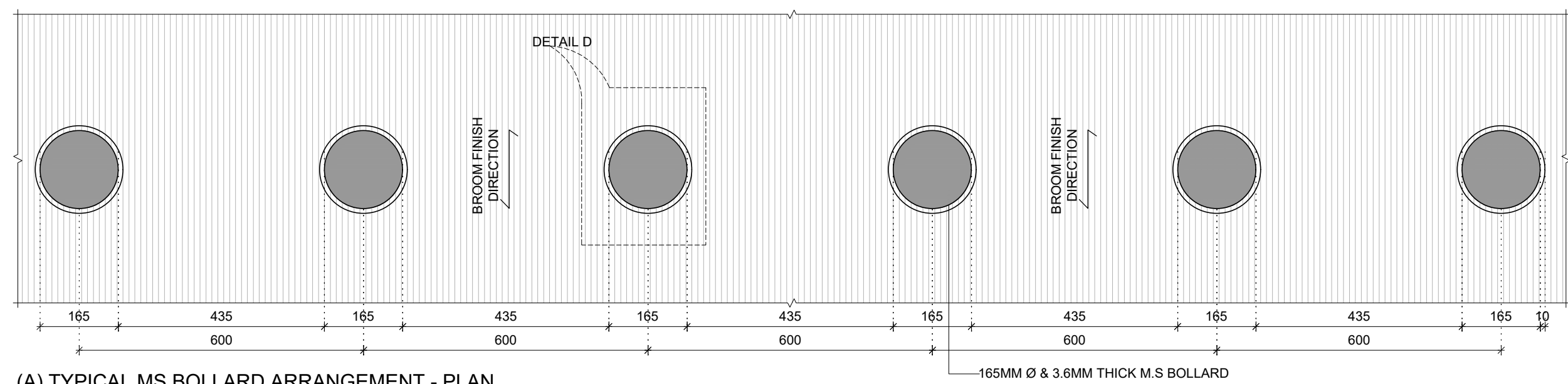
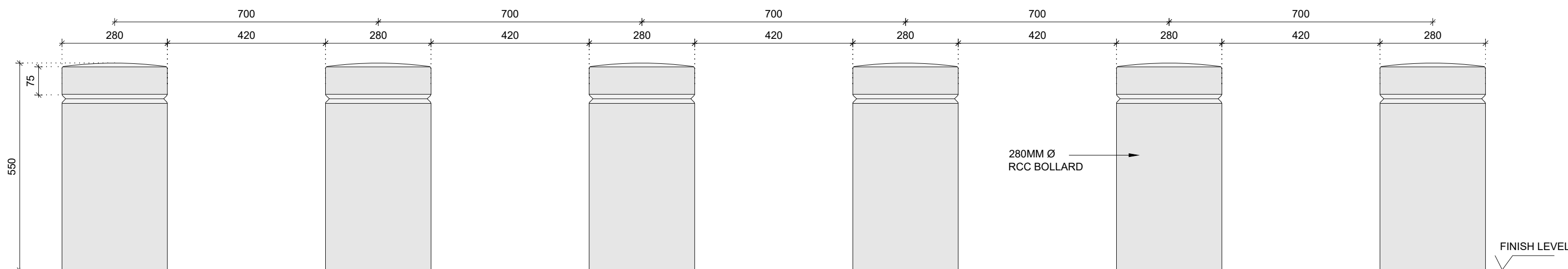


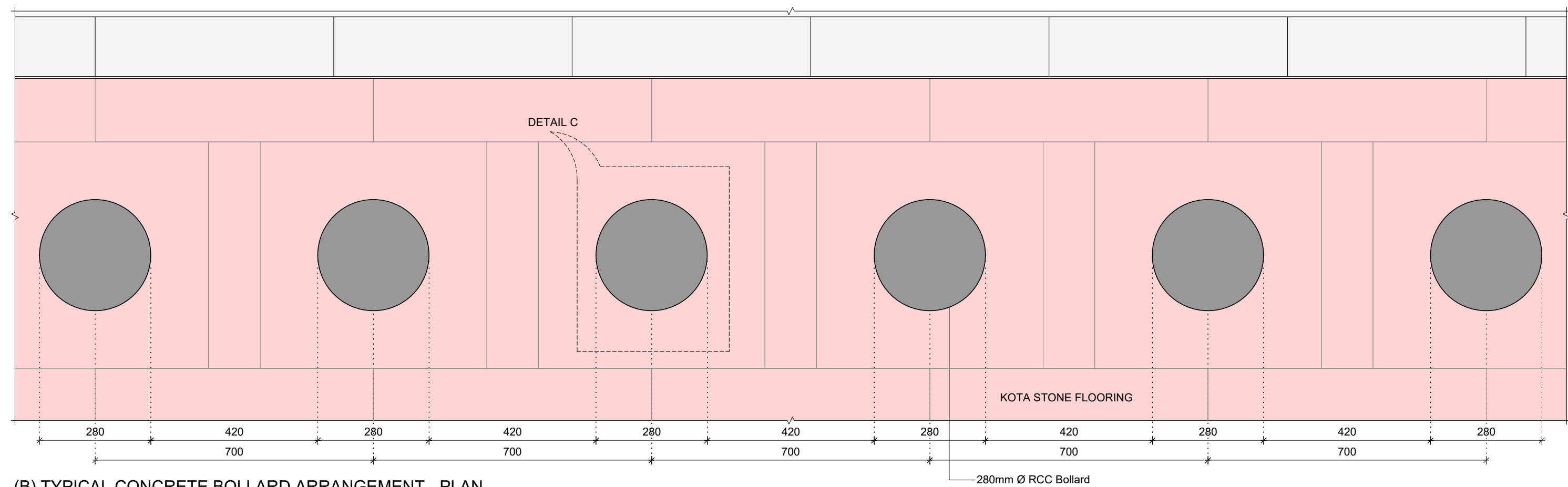
(A) TYPICAL MS BOLLARD ARRANGEMENT - ELEVATION



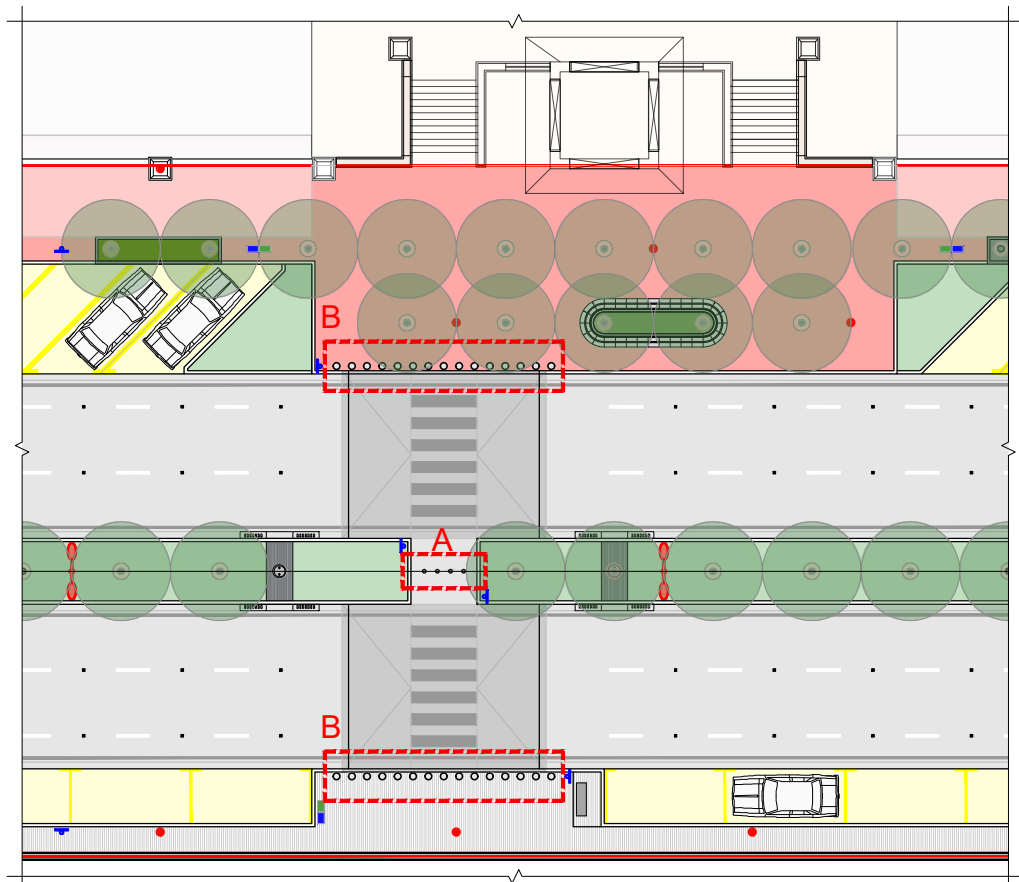
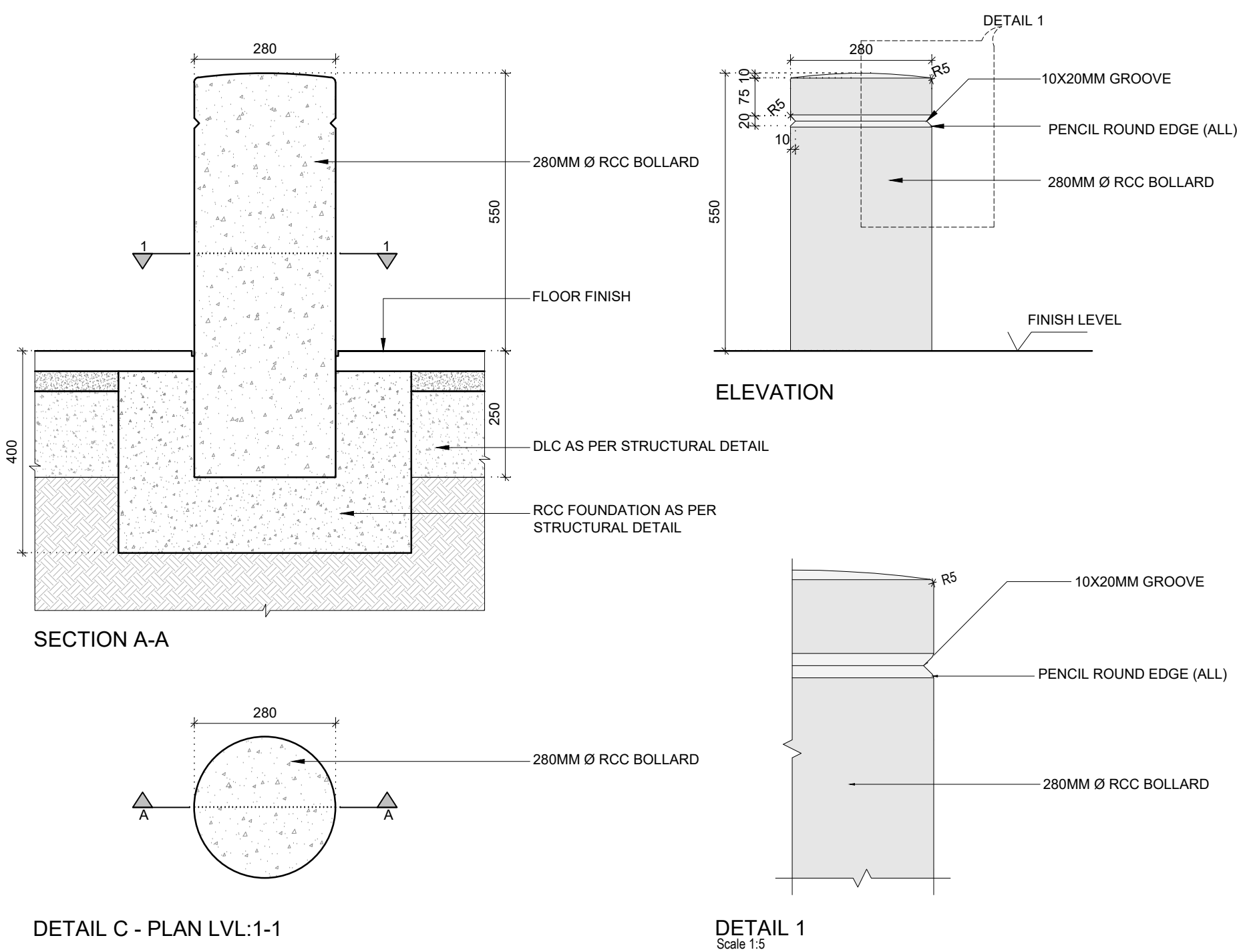
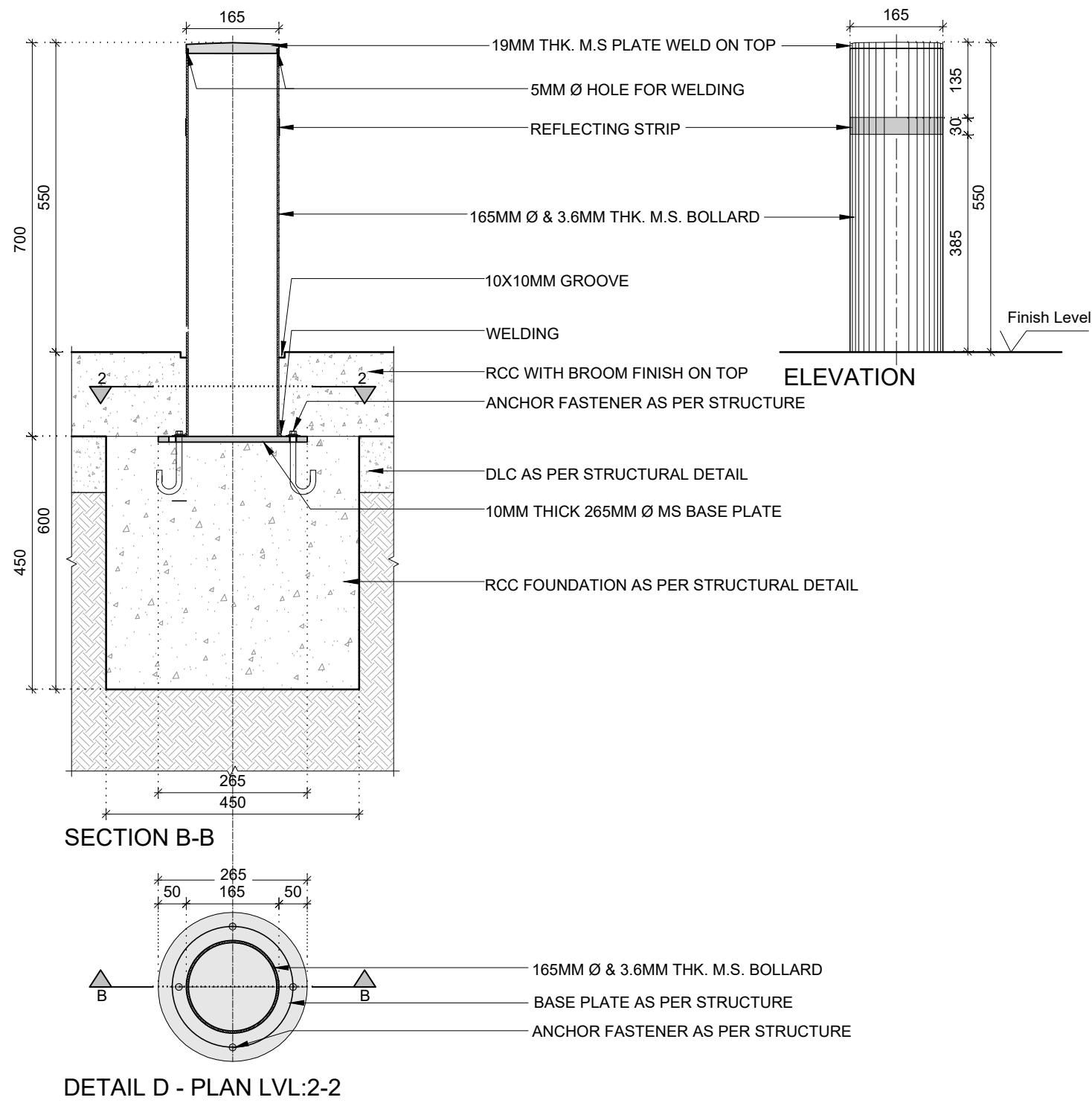
(A) TYPICAL MS BOLLARD ARRANGEMENT - PLAN



(B) TYPICAL CONCRETE BOLLARD ARRANGEMENT - ELEVATION



(B) TYPICAL CONCRETE BOLLARD ARRANGEMENT - PLAN



Notes:
1. This drawing and its contents are the property of HCP Design, Planning and Management Pvt. Ltd. It is not to be reproduced, copied, loaned, exhibited or used, in whole or in part, except for the purpose it is intended for, without prior written consent from HCP.
2. In case there is any discrepancy between the Architectural drawings and other representational drawings, the Architectural drawings must be followed and any discrepancy between the two must be brought to the notice of the Architect before commencement of work.
3. All dimensions must be read and not measured. Please refer to detailed drawings wherever relevant.
4. This drawing is indicative & showing of General Arrangement Development only. Final alignment drawing will be prepared based on TP Scheme, ROW and confirmation from AMC and relevant authority.

SPECIFIC INSTRUCTIONS:
THESE DRAWINGS ARE NOT CONSTRUCTION DRAWINGS NOR DO THEY PURPORT TO DO SO. THEY ARE CONCEPTUAL DESIGN DRAWINGS FOR UNDERSTANDING OF THE PROJECT AND MODIFICATIONS ARE TO BE EXPECTED IN FINAL CONSTRUCTION DRAWINGS.



REF.	DATE	DESCRIPTION
T00	31/07/2025	FOR TENDER
DRAWN BY	YASH SHAH	
CHECKED BY	VINOD RATHOD	
REVIEWED BY	KAVAN PATHAK	
APPROVED BY	PRATIK GANDHI	

ROAD ALONG EMBANKMENT, PHASE 02
METAL & CONCRETE BOLLARD DETAIL
DWG.NO.: 17060-11-00-HCP-DG-6514-T00
SCALE: A1-1:10 (A3-1:20)
DATE : 31/07/2025

6514

PROJECT NAME
SABARMATI RIVER FRONT DEVELOPMENT PROJECT

CLIENT
SRFDCL
AT AHMEDABAD PROJECT NO. 17060-11

