



www.sabarmatiriverfront.com



Shri Keshav Varma, IAS (Rtd.)
Chairman

Message from the MD's Desk



Shri Mukesh Kumar, IAS
Managing Director

Dear All,

It is my pleasure to inform you that SRFD Project has commenced development work for the Phase II. This Phase emphasizes on greener development and would be more engaging to the People as it will have stepped green multi layered Promenades, various recreational facilities like Open Gym area, Children Play area, Food Plaza, Amphitheaters, active Green Parks etc. The groundbreaking ceremony for Phase II was held on May 28, 2021 for the development work of 1.25 km. length of Riverfront from Dafnala to Camp Sadar Bazar on East bank of Riverfront.

SRFD Project through Miyawaki method has initiated to plant 1 Lakh Trees to ensure greening of areas along the Riverfront. Also, as a part of the Biodiversity Park extension, a Tree Plantation drive was organized on July 20, 2021 in which around 45,000 more Trees of about 170 different species will be planted in the Biodiversity Park extension. Development of various other facilities like Foot-over bridge, Multi-Level Car Park is on fast track. Also, both the Sports Complexes shortly will be open to Public. I hope the same would provide you an overall view of various developments happening at this one of its kind project

Managing Director

Phase II Groundbreaking Ceremony

The groundbreaking ceremony for the development work of 1.25 k.m. length of Riverfront from Dafnala to Camp Sadar Bazar on East bank was virtually performed by Hon'ble Chief Minister Shri Vijay Rupani on May 28, 2021.

The Phase II development would be adding 5.8 kms to the existing 11.5 kms stretch on the Riverfront East and 5.2 kms to the existing 11.5 kms stretch on the Riverfront West ending up to Indira Bridge. The Concept Plan and Design development for Phase II has given emphasize on Greener development having stepped green multi layered Promenades, excellent Road network, active green Parks, Children's Play area, Food Plaza, Amphitheaters etc.



Commencement of Phase-II Development



The entire development of the SRFD Project is towards Urban Regeneration and Environmental Improvement which will transform the River as a focal point of Leisure and Recreation. The Phase II development would be extending the total length of the SRFD Project from existing 23 kms. to 34 kms.

The Concept Plan and Design development for Phase II has given emphasize on Greener development having stepped green multi layered Promenades. SRFDCL will construct assets of public infrastructure like Lower Promenade, Roads, Street Lights, Storm Water Line etc. and also create more Green spaces for the welfare of the People.

On the Western side i.e. from Torrent Power to Indira Bridge and on Eastern side i.e. from Shahibaug Dafnala to Indira Bridge, a Road network would be developed by SRFDCL which would decongest the traffic and would increase the convenience of people on both the sides and also reduce the load on Cantonment road. Also, it will connect the World's largest Motera Stadium, Bullet Train Station, Sabarmati Railway Station and Airport.

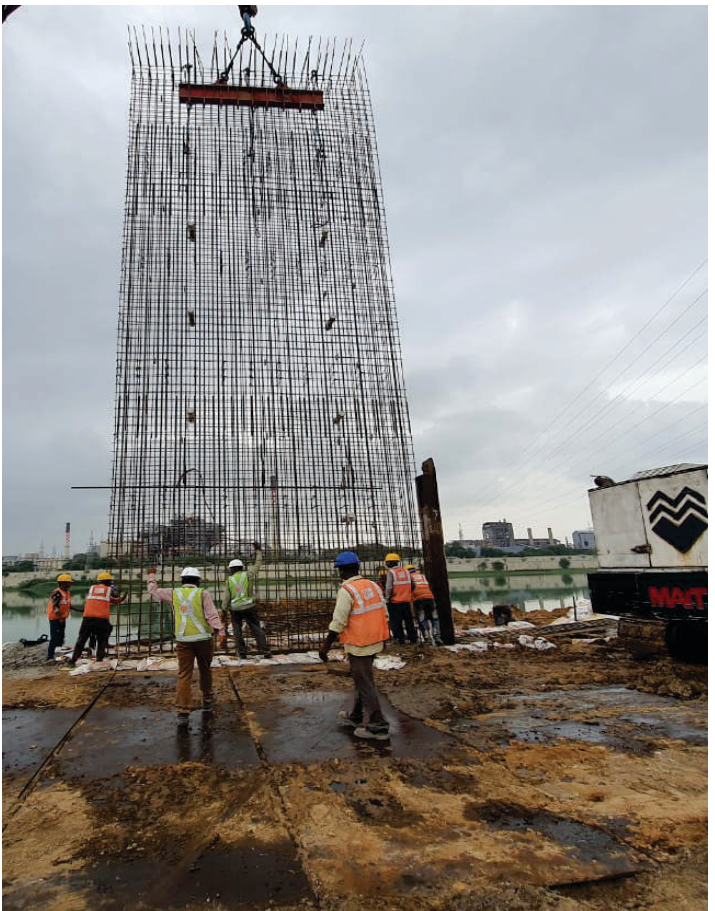
For the Phase II development around 72 hectares of River land of four villages of Ahmedabad district have been acquired and around 20 hectares of River land of two villages in Gandhinagar District are under acquisition. A Memorandum of Understanding has been executed between the Defense Estate officer, Gujarat Circle Ahmedabad Cantonment on behalf of Ministry of Defense, Govt. of India, President Cantonment board on the one hand and Ahmedabad Municipal Corporation on the other side for Phase II development. As per the MoU 13 hectares of land has been acquired from the Ahmedabad Cantonment.

Hydrology as well as hydraulic study has been completed for the development work in the area of Phase-II and its verification work has been done by the National Institute of Hydrology, Roorkee. A Barrage cum Bridge would be constructed which will maintain the water level in the River; also, it can store the water for 10-15 days for the City of Ahmedabad. With the construction of Barrage cum Bridge, areas like Sabarmati, Chandkheda, Motera of the Ahmedabad City will get direct connectivity with Hansol and Airport area and thus again decongest the traffic of the City.

Tender Awarded for Phase-II Development

SRFDCL has initiated the development of Phase-II by issuing the Tender for extending the Riverfront from Dafnala to Camp Sadar Bazar towards Indira Bridge on the East bank of the Sabarmati River. As of now the development will be carried out behind the Cantonment area. This initial level work has a length of 1250 meters and various development would be covered under this tender like Diaphragm Wall, Stepped Embankment (Lower, Middle and Upper Promenade) including Retaining wall with Green Developments. Moreover, it will also have recreational and leisure arrangements for people like areas designated for Food, Playing and open Gym area along with the Public Resting place. Multi layered Stepped Embankments with Green belt would be an attraction of Phase-II.

The development work of Phase II has already begun. The initial tender for the development of 1250 meters area from Dafnala to Camp Sadar Bazar has been awarded to M/S ITD Cementation India Ltd. The construction work has begun for the 600 mm thick and 55 feet deep Diaphragm Wall and a Retaining wall including the Stepped embankment (Lower, Middle and Upper).



Tree Plantation drive for Biodiversity Park Extension

As part of the Biodiversity Park extension, a Tree Plantation drive was organized on July 20, 2021 to increase the Green cover in the City. It was held in the august presence of Shri Pradipsinh Jadeja- State Home Minister, Govt. of Gujarat, Shri Kiritkumar Parmar, Hon'ble Mayor along with other dignitaries of the State and Ahmedabad Municipal Corporation.

At present there are around 7000 Trees developed and around 45,000 more Trees of about 170 different species will be planted in the Biodiversity Park extension. Various endangered species along with the fruit bearing Trees will be planted which will become a resting and nesting place for the migratory as well as native birds. After the extension of this Park the total area of this Urban jungle will be of around 6 hectares.



Initiative to Plant 1 Lakh Trees through Miyawaki Methodology

To increase the Green cover of the City, SRFD Project has taken an initiative to plant 1 lakh Trees through Miyawaki methodology. A Tree Plantation Program was organized on July 6, 2021 by SRFDCL and various Trees were planted in the august presence of Shri Anil Mukim, IAS, Chief Secretary, Government of Gujarat, Shri Mukesh Kumar, IAS, Municipal Commissioner, Ahmedabad and MD, SRFDCL, Shri R.K Mehta Dy. Municipal Commissioner and ED, SRFDCL at Subhash Bridge Garden. More than 2700 Trees have been planted near Subhash Bridge Garden. In this method multi-layered saplings are planted close to each other which grows 10 times faster and the forest is 30 times denser.



Sabarmati Riverfront Development Corporation Ltd.

2nd Floor, "Riverfront House", B/h. H.K. Arts College,
Between Gandhi & Nehru Bridge, Riverfront Road - West,
Ahmedabad - 380009. Gujarat.

Tel: +91 (079) 26580430 • Email: office@srfdcl.com

